

NYPL RESEARCH LIBRARIES



<http://stores.ebay.com/Ancestry-Found>



<http://stores.ebay.com/Ancestry-Found>

Digitized by the Internet Archive  
in 2008 with funding from  
Microsoft Corporation

<http://www.archive.org/details/cityofhutchinson00stum>

<http://stores.ebay.com/Ancestry-Found>

100%  
Satisfaction  
Guaranteed





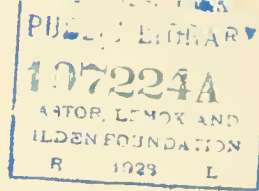


With Compliments of  
Your Cousin:  
Harry

Hutchinson, Kas -  
Aug. 1893. -

COPYRIGHTED BY  
EWING STUMM, PUBLISHER  
1893





# Souvenir of Hutchinson, Kansas



## DESCRIPTIVE.

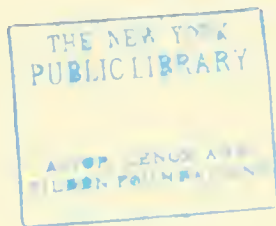
**H**UTCHINSON is a beautiful city of 12,000 inhabitants, located in the Arkansas Valley 230 miles from Kansas City and twenty-five miles from the geographical center of the state. It was founded in 1871 by C. C. Hutchinson, from whom it received its name. From 1883 it has had a rapid and prosperous growth, having increased in population 10,000 in the past ten years. In 1887 a vein of pure rock salt, 325 feet in thickness, was discovered at a depth of 400 feet underlying the vicinity of Hutchinson. The salt industry has been developed until at the present time sixteen salt plants are in operation, with an annual capacity of 2,000,000 barrels. Hutchinson has become famous as "the Salt City of the West." The city has also acquired quite a reputation as a convention city, having provided an auditorium in Riverside Park, on the Arkansas River, with a seating capacity of 4,500, in which is held more county, district and state conventions than in any other city in the state. The city is provided with a first-class system of water-works, telephone exchange and ten miles of street car service. There are also various wholesale and manufacturing institutions in the city and the railroad tonnage in and out of the city exceeds that of any other city in the state, and is the center of five railroads.





Photo by McInturff.

FIRST AVENUE, EAST.





Santa Fe Block.  
Hotel Brunswick.

Sidlinger Block. Photo by McInturff.  
Citizens' Bank.

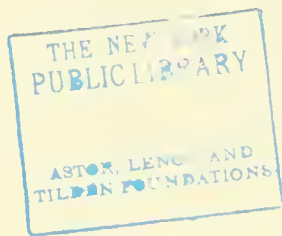
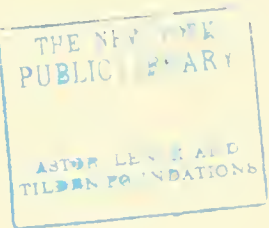




Photo by McInturff.

THE VALLEY STATE BANK.





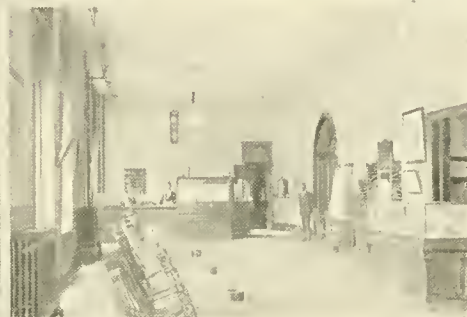


Photo by McInturff.

Dining Room.  
Office.

Parlor.  
Midland Hotel.

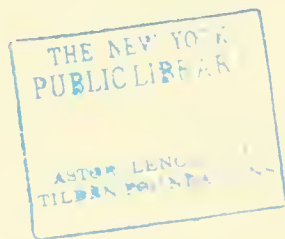




Photo by McInturff

WINNE & WINNE, INVESTMENT BANKERS,  
Cor. Avenue A and Main Street.

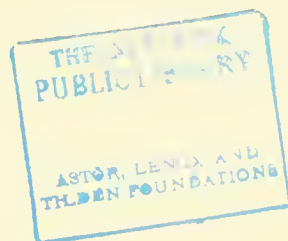
U.S. DEPARTMENT OF AGRICULTURE  
PUBLIC AFFAIRS  
WASHINGTON, D.C.  
JULY 1954



Santa Fe Hotel.  
Zimmerman Block.

Burns Block.  
Puterbaugh Block.

Photo by McInturff.



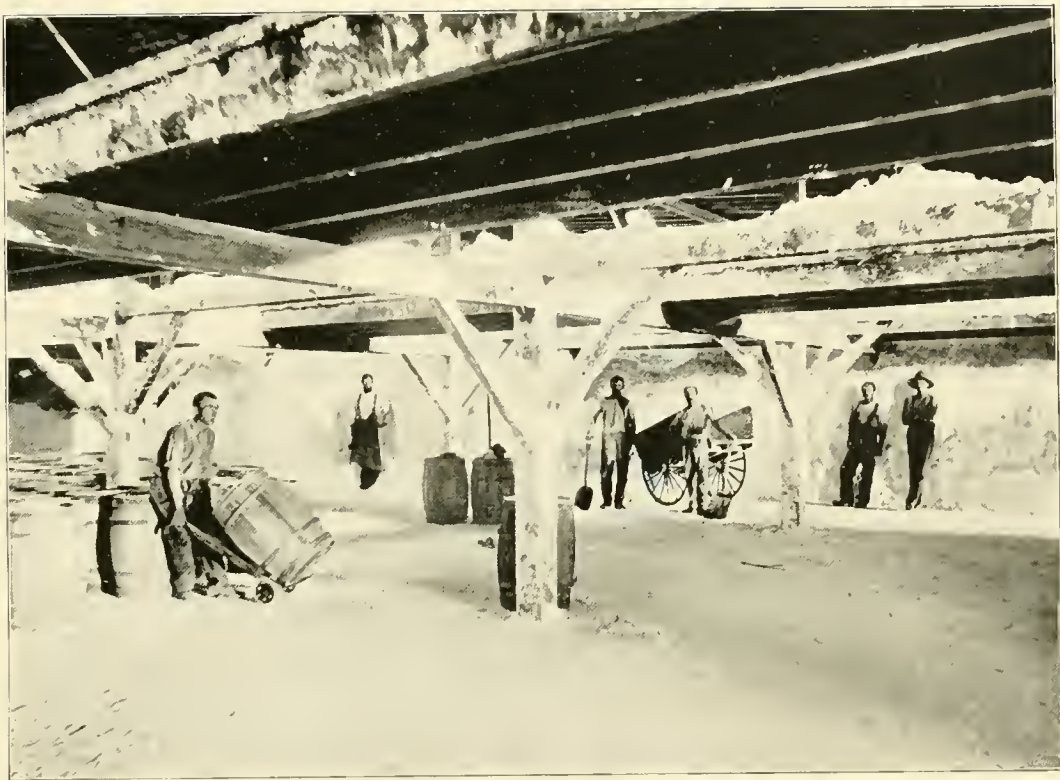


Photo by McInturff.

PACKING ROOM—RIVERSIDE PLANT.

Property of Kansas Salt Co.







Photo by McInturff.

COOPERAGE YARD - RIVERSIDE PLANT.

Property of Kansas Salt Co.



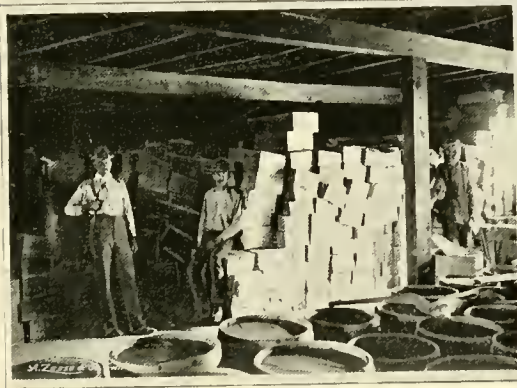


Photo by McInturff.

Interior Cooper Shop.  
Boxing Room.

Cooper Shop.  
Salt Vats.

Property of Kansas Salt Co.



<http://stores.ebay.com/Ancestry-Found>



Photo by McInturt.

SACKING DAIRY SALT RIVERSIDE PLANT.

Property of Kansas Salt Co.







Photo by McInturf.

R. S. V. P. PACKING ROOM—RIVERSIDE SALT PLANT.

Property of Kansas Salt Co.





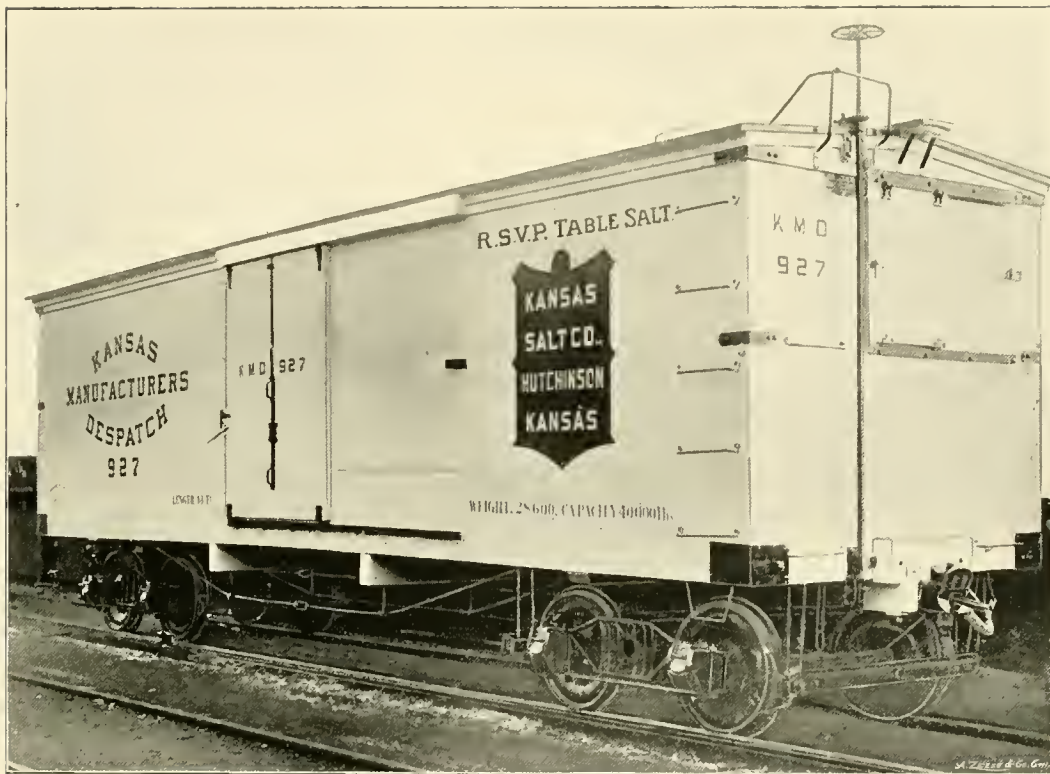


Photo by McInturff.

CAR OF KANSAS SALT CO.

THE NEW YORK  
PUBLIC LIBRARY

ASTOR LENOX AND  
TILDEN FOUNDATIONS



Photo by McInturff

COURT OF HUTCHINSON TENNIS CLUB.



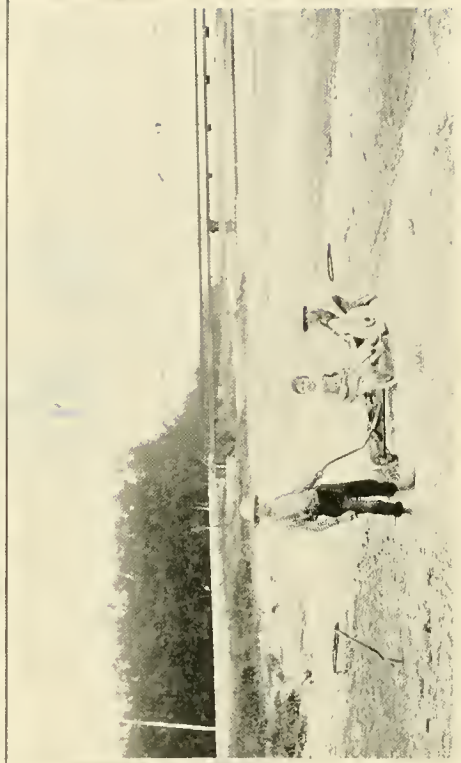


Photo by McIntartt.

GLENDALE PARK.

RIVERSIDE PARK AND ARKANSAS RIVER BRIDGE.





Photo by Medhurst.

Ice Plant and Cold Storage Co.  
State Reformatory.  
Hutchinson Water, Light and Power Co.



THE NEW YORK  
PUBLIC LIBRARY  
ASTOR LENOX TILDEN FOUNDATION  
100 N. 4TH ST. NEW YORK 17, N.Y.

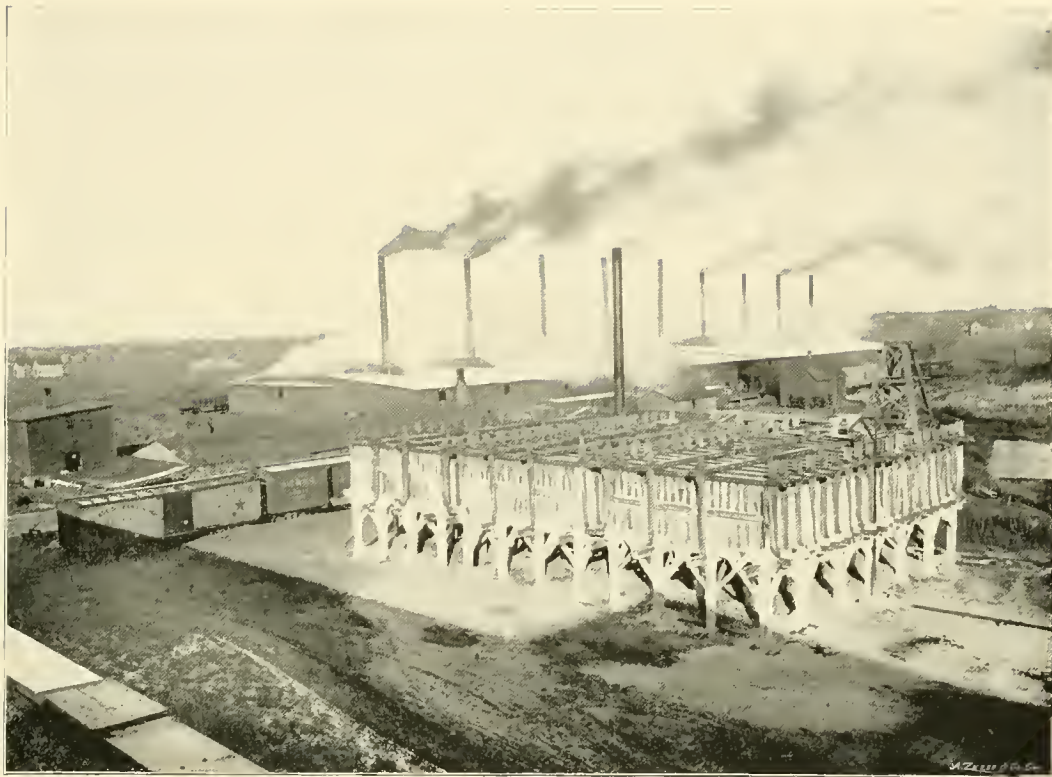




Main Street, Looking South.  
Auditorium.

Reno County Jail. Photo by McInturff  
Main Street, Looking North.





107224

Photo by McIntire

G. & H. SALT PLANT.—Capacity 1500 Barrels.

Largest Salt Plant in the World.

Property of Kansas Salt Co.



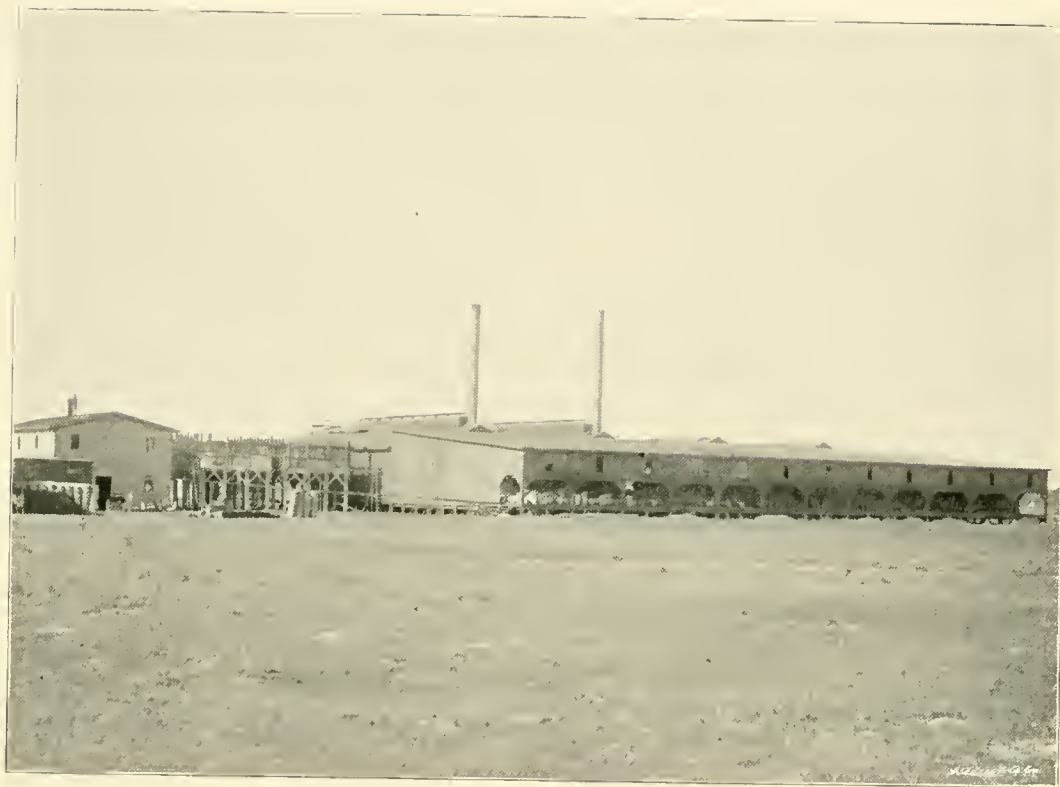


Photo by McInturff

NEW YORK SALT PLANT.—Capacity 600 Barrels.  
Property of Kansas Salt Co.



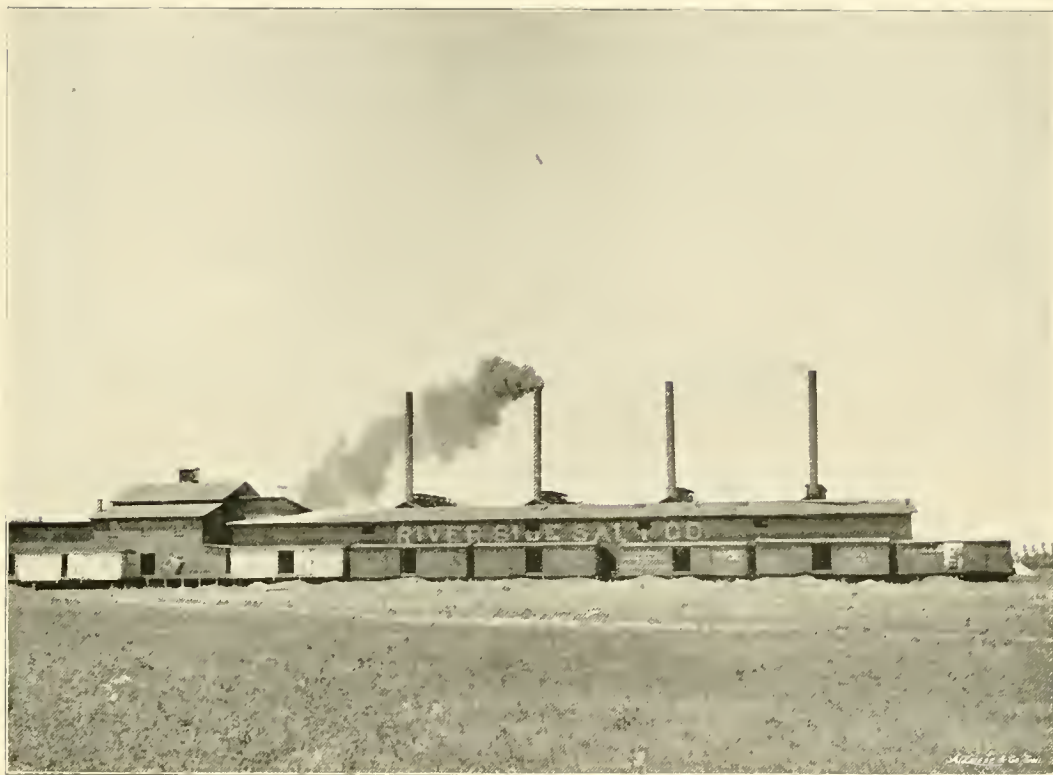


Photo by McInturff

RIVERSIDE SALT PLANT.—Capacity 600 Barrels.  
Property of Kansas Salt Co.

<http://stores.ebay.com/Ancestry-Found>





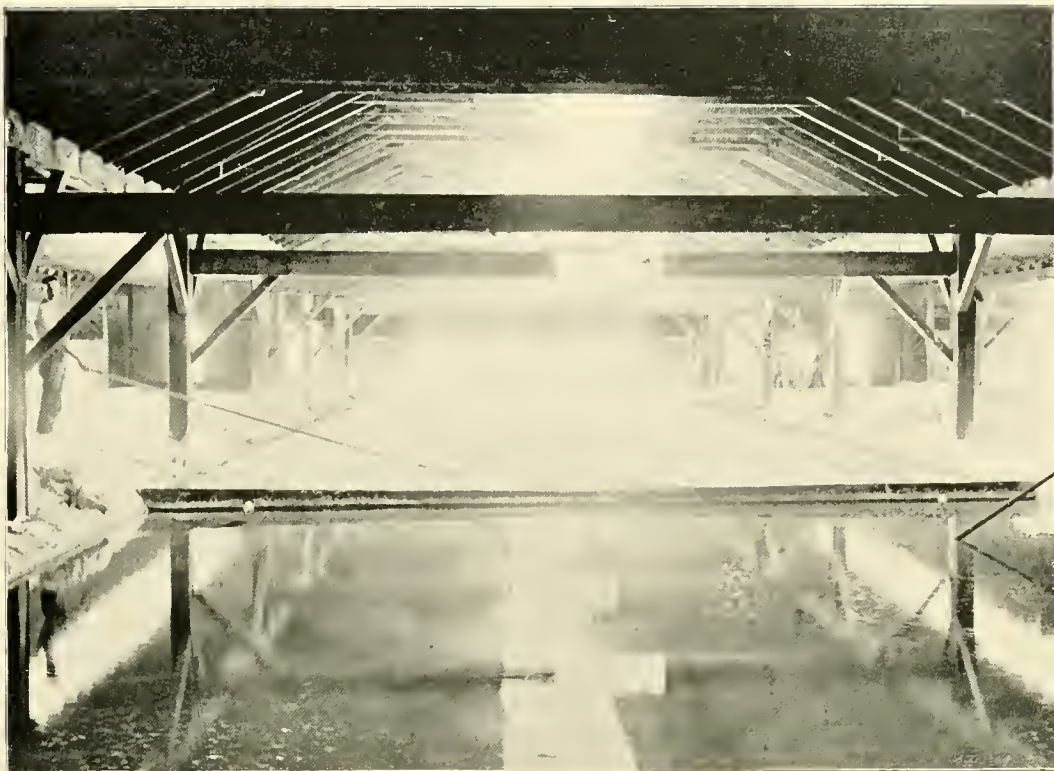
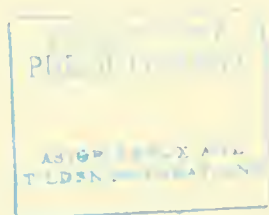


Photo by McInturff.

SINGLE EVAPORATING PAN—RIVERSIDE PLANT.

Property of Kansas Salt Co.



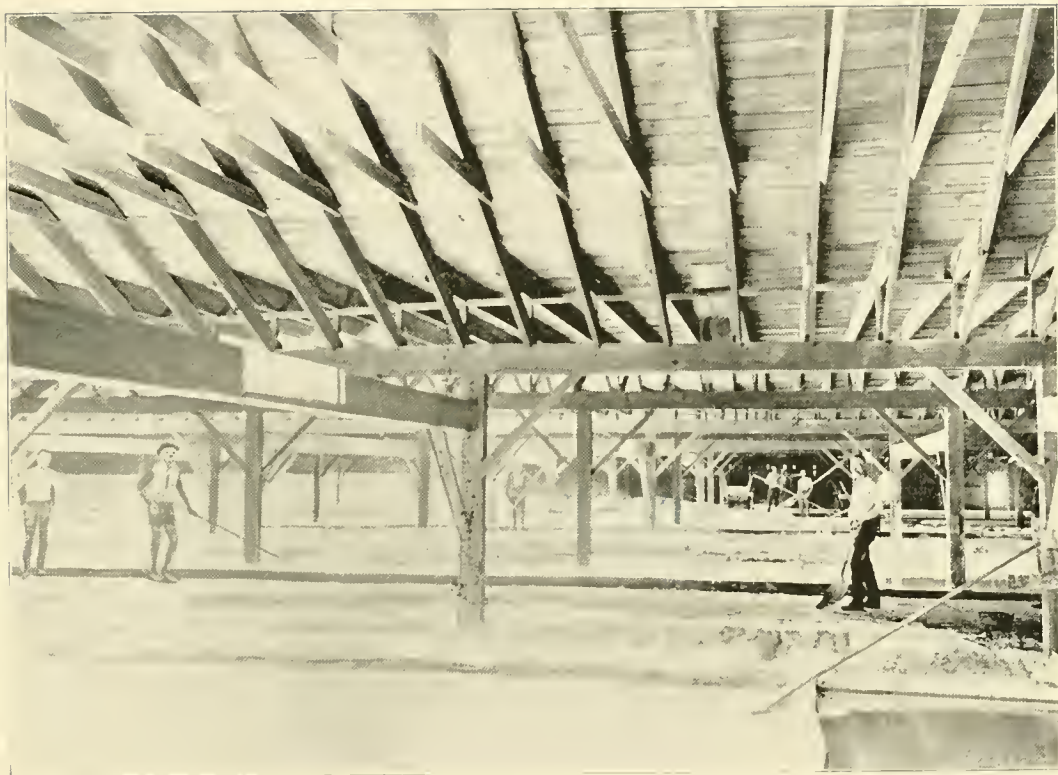


Photo by McInturff.

VIEW OF EVAPORATING PANS - RIVERSIDE SALT PLANT.  
Property of Kansas Salt Co.





Photo by McInturff.

RUNWAY OF RIVERSIDE PLANT.

Property of Kansas Salt Co.







Photo by McInturff.

THE DOCHERTY DRY GOODS COMPANY.

Leading Dry Goods House of the City.







Photo by McInturff.

Water Power Mill.

Whiteside & Penney Building.

Hutchinson Daily News.

Opera House Block.

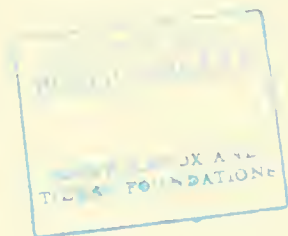




Photo by McInturff.

THE FIRST NATIONAL BANK.





Photo by McIntire

HUTCHINSON NATIONAL BANK.

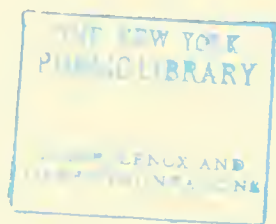




Photo by McInturf.

South Side.

Tenth Street.

Avenue B.

Central High School.

SCHOOL BUILDINGS.

Sherman Street.

Fourth Avenue.

North Side.







Photo by McInturff.

J. D. Wiener.  
C. M. Williams.

Dr. F. G. Brown.  
Dr. S. H. Sidlinger.





C. M. Williams. John Chapman. H. W. Gleason.

J. W. Wood.

Atwood Flats.

Avenue A Court.

Photo by McInturf.

E. Wilcox.

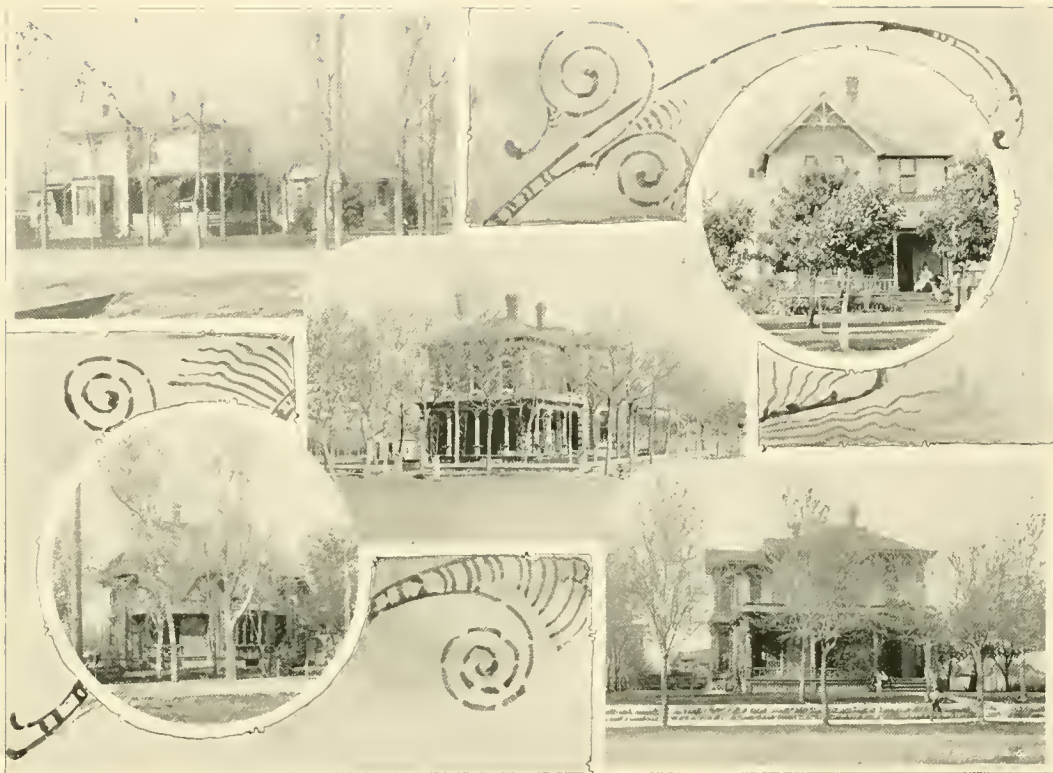




First Methodist Episcopal Church.  
Lutheran Church.

Baptist Church. Photo by McInturff.  
First Presbyterian Church.



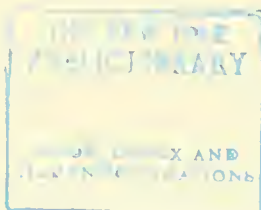


W. F. Mulkey.  
John W. Roberts.

W. E. Burns.

C. B. Wilfley.  
J. F. Smith.

Photo by McInturff.







Chas. Bloom.  
J. B. Brown.

J. S. George.  
R. R. Price.

Photo by McInturff.

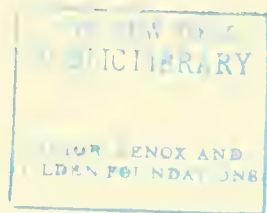




J. M. Brehm.  
G. C. Miller.

J. F. Greenlee.  
J. M. Mulkey.

Photo by McInturf.

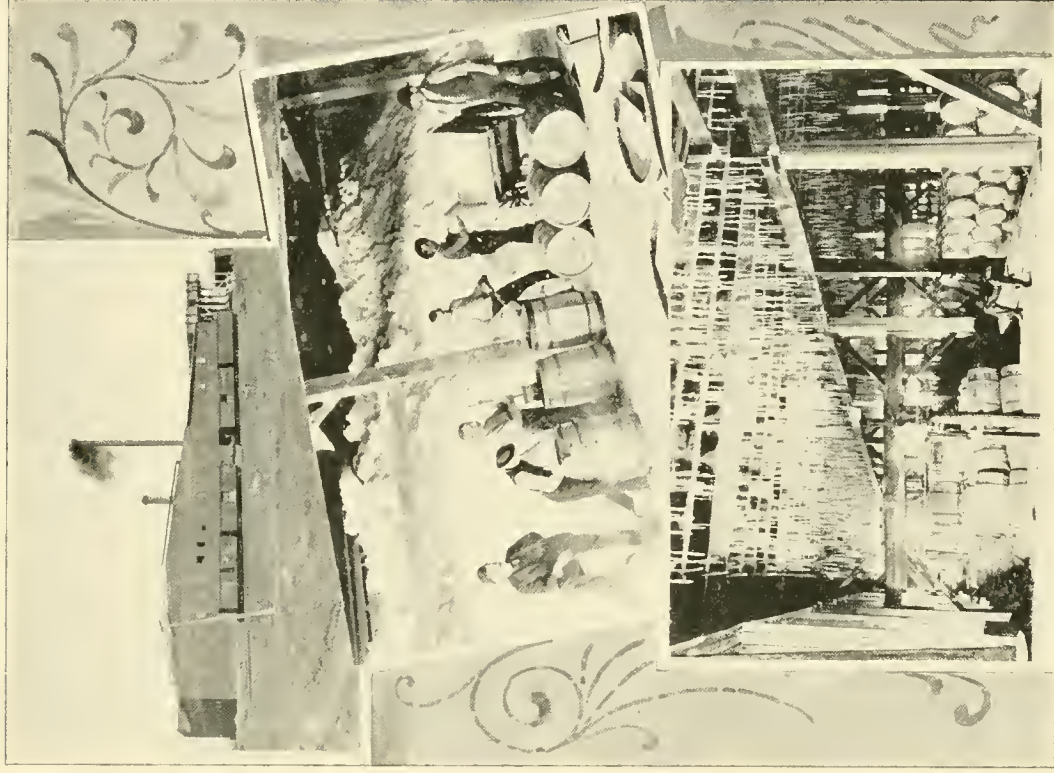




H. Whiteside.  
Scott E. Winne.

W. L. Woodnutt. Photo by McInturff.  
C. L. Christopher.





Plant.

Packing Room.

Storage Room.

BARTON SALT WORKS

Photo by McInturf

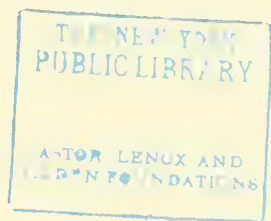






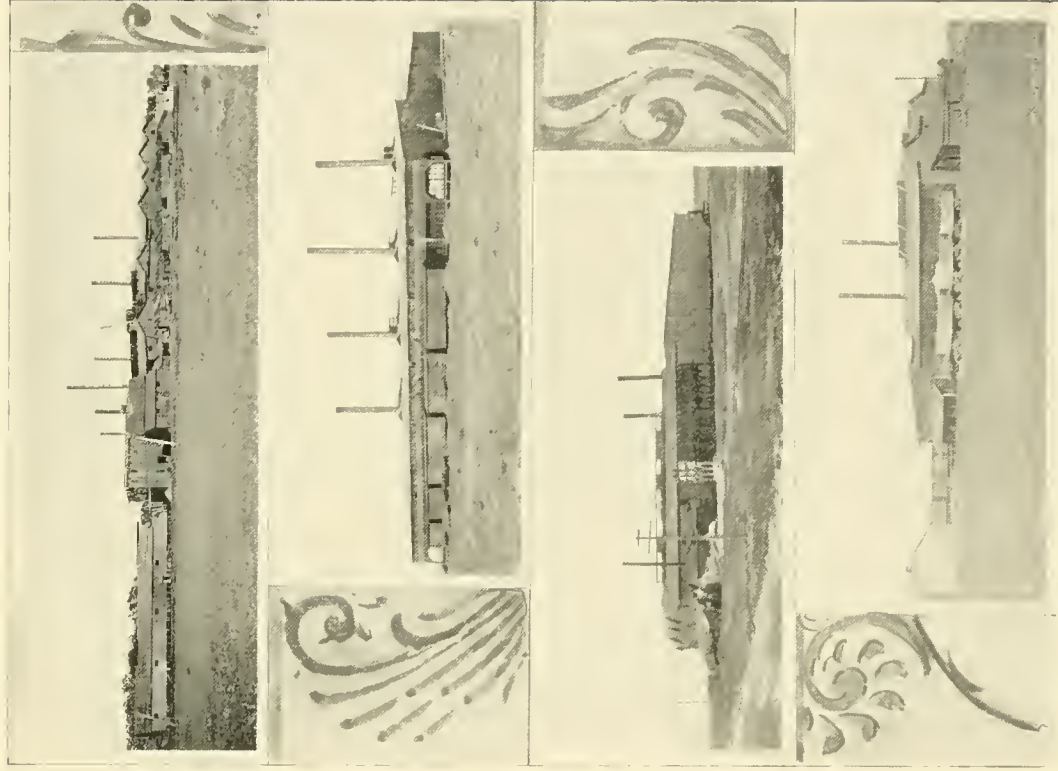
Photo by McIntire.

Hutchinson Packing Co.

Hutchinson Wholesale Grocer Co.

Lard Refinery and Soap Factory.





VINCENT. - Capacity 600 Barrels.

CRYSTAL. Capacity 600 Barrels.

PENNSYLVANIA. Capacity 300 Barrels.

McFARLAND. - Capacity 300 Barrels.

HUTCHINSON SALT AND MANUFACTURING CO.

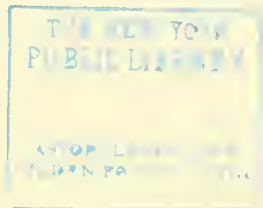
Photo by Melnutt





QUEEN CITY.—Capacity 300 Barrels.  
WESTERN. Capacity 600 Barrels.  
DIAMOND.—Capacity 300 Barrels.

QUEEN CITY.—Capacity 300 Barrels.  
BARTLETT.—Capacity 150 Barrels.  
STAR.—Capacity 300 Barrels.



15









<http://stores.ebay.com/Ancestry-Found>

<http://stores.ebay.com/Ancestry-Found>

